

## 1. Install Battery, Adjust Settings

Remove the protective boot.

Insert batteries as shown.

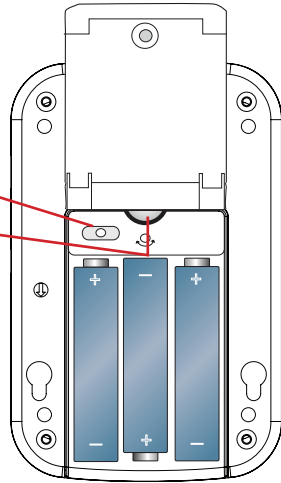
CordLess® Monitor settings:

Volume Tone/Melody Adjustment  
Default Setting: Melody 1

Alert Volume Dial  
Default Setting: Full Volume

Close the battery door and secure it with the small Philips-head screw.

Place the monitor in its protective plastic boot.



## 2. Program Sensor Pad(s)

The CordLess® Monitor can work in two modes:

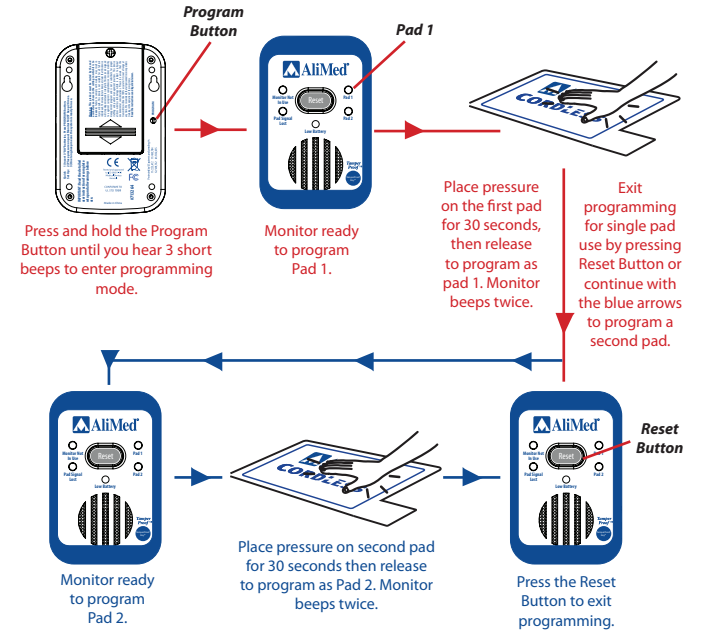
1. With one CordLess® bed or chair sensor pad
2. With two CordLess® bed sensor pads

(See separate instructions for CordLess® Floor Mat operation)

Place one or two CordLess® bed or chair pads within reach. Each sensor pad comes with a CordLess® Transmitter connected and turned on.

Press and hold the Program Button on the back of the monitor until you hear three short beeps to enter programming mode. Release the button.

**\*NOTE:** When there are two pads programmed to the monitor and no one is on the pads, press the Reset Button twice to reset the monitor.



## 3. Test the system for each pad

-For first-time use, apply pressure to pad for 20 seconds.

-Monitor will beep two times.

-Status light will blink while pressure remains on pad.

-When pressure is removed, monitor will alarm.

-Press Reset Button to silence alarm or use TamperProof™ Key, depending on your setting.

A. Test Pad 1



B. Test Pad 2



**IMPORTANT:** When using the #713264 CordLess® Monitor with two pads, place all components (the two pads and monitor) within 15 feet of each other. Test the system before each use.

## Resetting the Monitor/TamperProof™ Mode with TamperProof™ Key (Optional)

Caregivers can choose to reset the CordLess® Monitor in one of two ways:

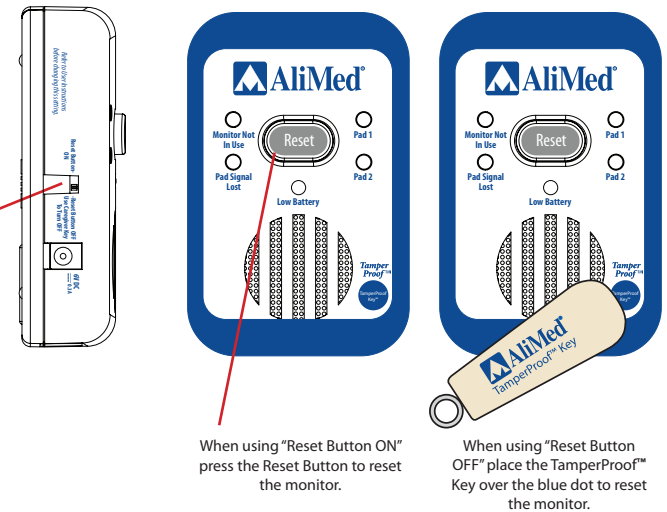
**“Reset Button ON”:**  
Pressing the Reset Button on the front of the monitor.

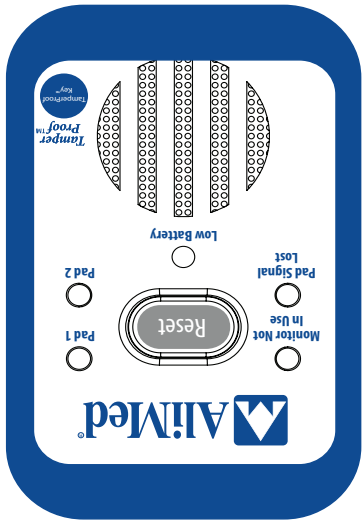
**“Reset Button OFF”:**  
Placing the optional TamperProof™ Key over the blue dot on the front of the monitor.

Option 2 allows only the caregiver to reset the monitor.

See switch on side of monitor to select the option of your choice.

For more information about the TamperProof Key and how it can be used in your facility's Fall Risk Assessment Program, call 800.225.2610.





AliMed  
297 High Street  
Dedham, MA  
02026 USA  
#7317REV0515 CCO #773

MDDS GmbH  
Schiffgraben 41  
D-30175 Hannover,  
Germany

CE

**TamperProof™**  
with included TamperProof™ key  
Patented Technology

- Works with two sensor pads simultaneously
- No cords between monitor and sensor pads

**CordLess®**  
**Fall Monitor**  
**#713264**

## Installation and Use Instructions

### CordLess® Fall/Mobility Monitor #713264

**WARNING:** Failure to comply with warning may result in injury or death. This device is not suitable for all individuals. Other devices may be required. This device is not a substitute for visual monitoring by caregiver. The manufacturer does not claim that this device will stop elopement and/or stop falls. This device is designed to augment caregiver's comprehensive resident mobility management program. **Test this device before each use. Read the instructions and Legal Disclaimer.**

The AliMed #713264 CordLess® Monitor is designed to be installed by the end user. As such, it is the entire responsibility of the buyer to ensure that the system is properly installed and tested. Further, the system is not designed to replace good caregiving practices including, but not limited to:

- Direct patient supervision
- Adequate training for personnel for fall prevention and elopement
- Testing of the system before each use

WHERE PERMISSIBLE, IT IS THE SELLER'S INTENT TO LIMIT ANY LIABILITY FOR SPECIAL, CONSEQUENTIAL, OR INCIDENTAL ECONOMIC DAMAGES TO REFUND OF THE PURCHASE PRICE OR REPLACEMENT OF THE GOODS. SELLER DISCLAIMS ANY LIABILITY FOR COMPENSATORY OR OTHER DAMAGES ARISING OUT OF THE USE OF THE GOODS.

**WARNING:** The manufacturer does not claim that this device will stop elopement and/or stop falls. This device is designed to augment caregiver's comprehensive resident mobility management program. This product is to be used by a licensed caregiver only.

**Limited Warranty:** Seller warrants that the goods sold will be free from defects of workmanship and manufacturing, for a period of one year from the date of sale. Other than this limited warranty, seller makes no express or implied warranties. Except for this limited warranty, NO EXPRESS OR IMPLIED WARRANTIES ARE GIVEN AND NO AFFIRMATION OF SELLER, BY WORDS OR ACTION, WILL CONSTITUTE A WARRANTY, THE GOODS BEING PURCHASED ARE BEING SOLD ON A "WITH ALL FAULTS" BASIS. THE ENTIRE RISK AS TO THE QUALITY AND PERFORMANCE OF THE GOODS WITH THE BUYER. SHOULD THE GOODS PROVE DEFECTIVE FOLLOWING THEIR PURCHASE, THE BUYER, AND NOT THE MANUFACTURER, DISTRIBUTOR OR RETAILER, ASSUMES THE ENTIRE COST OF ALL NECESSARY INSTALLATION, SERVICING, OR REPAIRS.

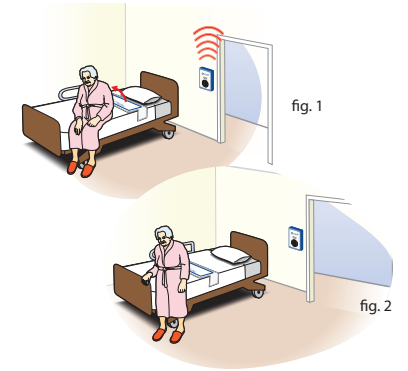
### CordLess® Bed Sensor Pads

#### TEST THE SYSTEM

- Apply pressure to the pad to activate system. The monitor will beep twice when activated. The Pad 1 or Pad 2 light on the front of the monitor will blink as long as there is pressure on Pad 1 or Pad 2 respectively.
- The alert will sound whenever pressure is released from pad. Press the "Reset" button on front of the monitor or use the TamperProof™ key, depending on your reset setting to silence the alert.
- If the Pad Lost light is on and system does not test properly, reduce the distance between the monitor and the pad. Retest.

#### BED PAD PLACEMENT

- Place the pad under shoulders to be alerted when the resident sits up in bed (fig. 1)
- Place pad under hips/buttocks to be alerted when the resident vacates the bed (fig. 2)



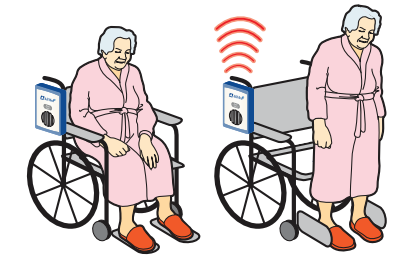
### CordLess® Chair Sensor Pads

#### TEST THE SYSTEM

- Apply pressure to the pad to activate system. The monitor will beep twice when activated. The Pad 1 or Pad 2 light on the front of the monitor will blink as long as there is pressure on Pad 1 or Pad 2 respectively.
- The alert will sound whenever pressure is released from pad. Press the "Reset" button on front of the monitor or use the TamperProof™ key, depending on your reset setting to silence the alert.
- If the Pad Lost light is on and system does not test properly, reduce the distance between the monitor and the pad. Retest.

#### WHEELCHAIR/CHAIR PAD REPLACEMENT

Center pad on the chair seat under buttocks.



### CordLess® Floor Mats

#### TEST THE SYSTEM

- Step on the Floor Mat to set off the alert.
- Press the "Reset" button on the front of the monitor or use the TamperProof™ key, depending on your reset setting to silence the alert.

**IMPORTANT:** There must be a 15-second period with no pressure on the floor mat for the #713264 Fall Alarm to fully reset.

**NOTE:** The Status lights do not function when using floor mats.

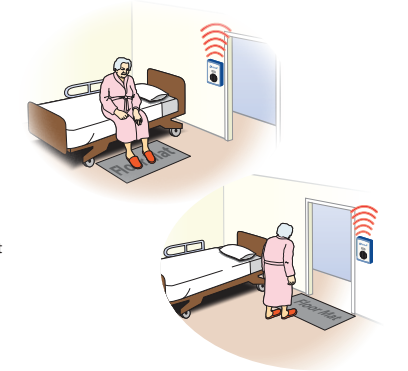
- If the "Pad Lost" light is on and the system does not retest properly, reduce the distance between the monitor and the floor mat. Retest.

#### FLOOR MAT PLACEMENT

- Place the floor mat in the desired location such as a critical doorway or next to the bed.

#### CAUTION: #713264 and corded sensor pads/floor mats

Corded sensor pads and/or floor mats will override and disable wireless communication with all programmed CordLess® pads when plugged into the #713264 fall monitor. To reestablish wireless operation, unplug the corded device and test the CordLess® device(s) as described above.



### IMPORTANT INFORMATION:

AliMed CordLess® products utilize wireless technology which is subject to physical and environmental considerations. **These products must be tested by the end user before each use in the setting in which they are to be used.** Please be aware that the transmitter will not be 100% accurate if it is out of range at any time. **The transmitter is battery operated and the life of the battery will vary based on usage.** Wireless systems and monitors are intended as an addition to good caregiving practices and are not a substitute for proper staffing and patient management practices including, but not limited to, direct visual supervision of all residents by caregiver(s). We recommend that all personnel receive periodic training in the operation of these systems and that the systems are tested before each use.



297 High Street, Dedham, MA 02026

AliMed.com

Phone: 800.225.2610