

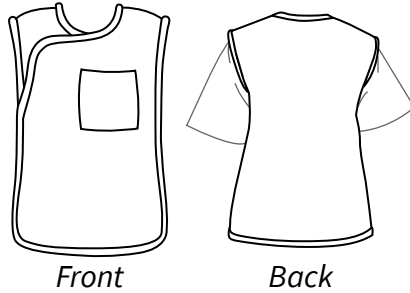


1. Vest Style:

Pair with any Perfect Fit Kilt for total body protection.
Available in Female and Male versions.

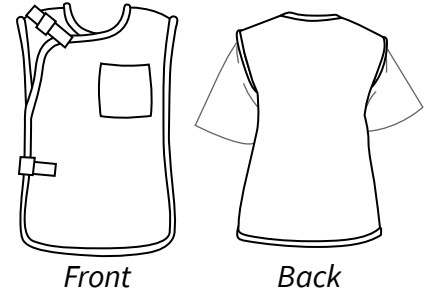
Hook-and-Loop Closure:

Inside front panel fastens with hook-and-loop for maximum adjustability while inner buckle prevents the inside panel from sagging.



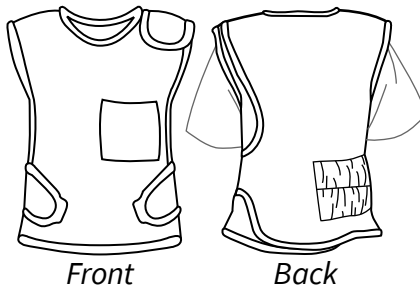
Buckle Closure:

Dual buckles at the shoulder and torso, along with hook-and-loop fasteners on the inside front panel offer a secure fit.



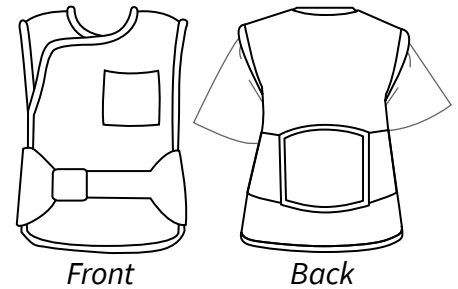
Reverse:

Elasticized stretch back offers a snug fit that hugs the body and shifts weight off the shoulders and to the waist. Hook-and-loop shoulder and waist fastener straps adjust for a closer fit.



Wide Belt:

Built-in 6"W Back-Saver Belt prevents slipping or getting lost. Offers lower lumbar support, helping to relieve back strain and fatigue by redistributing weight from shoulders to waist.

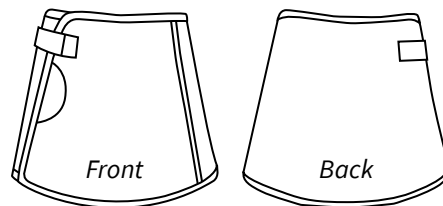


Vest not required

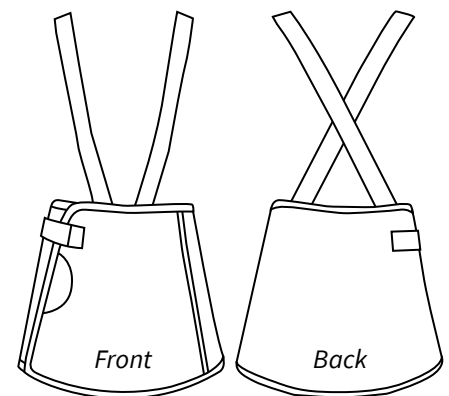
2. Kilt Style:

Pair with any Perfect Fit Vest for total body protection.
Unisex sizing.

Kilt and Kilt with Suspenders: Nonslip fabric and adjustable 2"W dual closure with buckle and hook-and-loop fastener keep the skirt snugly fastened while preventing slipping or twisting. Optional **Suspenders** securely hold skirt at the waist for even the most narrow-hipped body.



Kilt



Kilt with Suspenders

Kilt

Kilt with Suspenders

Kilt not required

3. Apron Weight Options:

Vests and Kilts offer full 0.5 mm Pb-equivalent front protection and 0.25 mm Pb-equivalent back protection.

Select Material	Weight*	Material	Procedure Length	Disposal Requirements
FeatherLite Lead Free	9.55 lbs.	100% antimony	Long	Environmentally friendly—no special disposal
Ultralight Lead Free	11.9 lbs.	100% antimony	Long	
Lightweight Lead	14.2 lbs.	Lead-based alloy	Short to medium	Requires special disposal or recycling
Standard Lead	16 lbs.	100% lead	Short	

*Based on Medium Vest and Kilt.

4. Sizing Options:

How to Measure for Vests and Kilts

When measuring, stand tall with arms down and feet together.

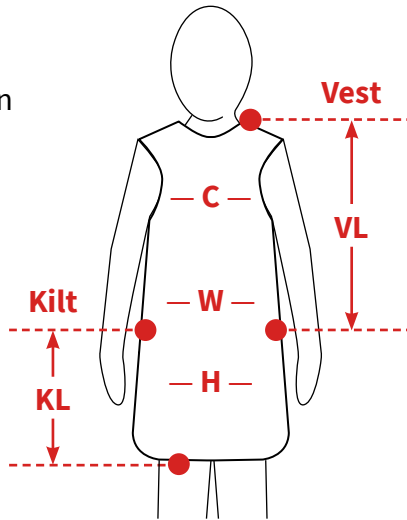
Chest (C): Measure circumference around widest part of chest.

Waist (W): Measure where you want the kilt top (this may or may not be your natural waist).

Hips (H): Measure circumference around widest part of hips.

Vest Length (VL): Measure from top of shoulder to top of kilt. Add 3" for overlap.

Kilt Length (KL): Measure from top of kilt to hem (suggest 1" above the knee). Adjust according to personal preference.



Tailored-Fit Measurements

Record your measurements in inches if requesting Tailored-Fit option, and select "Tailored-Fit" below.

Chest:

Waist:

Hips:

Vest Length (VL):

VL + 3" overlap:

Kilt Length (KL):

Sizing Chart for Vests

Select Gender	MALE		FEMALE	
Select Size	Chest	Length**	Chest	Length**
S	37" - 38"	24.5"	35" - 36"	21.5"
M	39" - 40"	25"	37" - 38"	22"
L	41" - 42"	25.5"	39" - 40"	22.5"
XL	43" - 44"	26"	41" - 42"	23"
XXL	45" - 46"	26.5"	43" - 44"	23.5"
3XL	47" - 48"	27"	45" - 46"	24"
Tailored-Fit (Record measurements above)				

**Note: Vest length includes a 3" overlap of kilt.

Sizing Chart for Unisex Kilts

Select Size	Waist	Hip	Length
S	28" - 29"	34" - 35"	19"
M	30" - 31"	36" - 37"	20"
M2	32" - 33"	38" - 39"	20"
L	34" - 35"	40" - 41"	21"
L2	36" - 37"	42" - 43"	21"
XL	38" - 39"	44" - 45"	22"
XXL	40" - 41"	46" - 47"	22"
3XL	42" - 43"	48" - 49"	23"
Tailored-Fit (Record measurements above)			

5. Color Options:

Choose from 400+ colors/patterns! [Click here to see color swatch choices.](#)

Color Swatch #:	Color Name:
-----------------	-------------

6. Thyroid Shield

Attached Thyroid Shield (same weight and color/print as apron)

7. Monogramming

Vest Monogramming

Lettering Style:

Block

ALL CAPS

Script

Line 1 (16 characters max. including spaces and punctuation):

Line 2 (16 characters max. including spaces and punctuation):

Thyroid Shield Monogramming

One Line Only (10 characters max. including spaces and punctuation):

8. Number of aprons you are requesting with the same specifications:

(For Tailored-Fit, please submit a separate form for each order.)

9. Additional Requests:

Please enter any specific special order selections including embroidery symbols, logos, and monogram thread colors:

10. Contact Information

Contact Person:

Sales Rep (if applicable):

Email Address:

Phone:

Facility Name:

Billing Address:

Address 2:

City:

State:

Zip:

(Shipping location, if different than billing)

Facility Name:

Shipping Address:

Address 2:

City:

State:

Zip:

(If applicable)

Account:

PO:

Contact me to process this order via credit card

Pub #7793-G

Perfect Fit Aprons and Thyroid Shields are not returnable. Sales are not final until approved by AliMed. Visit AliMed.com/billing-and-payments for sales tax details. We will email you a quote within 3-4 business days.